

SWING-OUT ROTOR, 4-PLACE | 1624



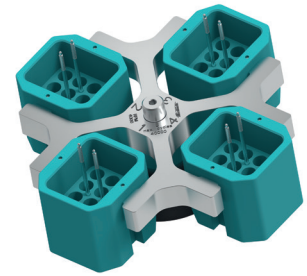
Rotor

max. RPM max. RCF	4,000 min ⁻¹ 1,968		
max. capacity	48 x 4 ml		
run-up run-down, braked in sec	22 25		
angle max. noise level	90° 48 dB (A)		
temperature in °C	-15		
Cat. No.	1624		

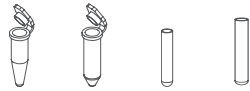


Bucket

Cat. No.	1366
-----------------	-------------



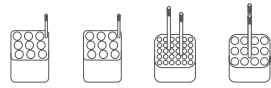
Vessels



capacity in ml	1.5	2.0	1	4
Ø x L in mm	11 x 38	11 x 38	6 x 45	12 x 60
max. RCF ²⁾	1,968	1,968	1,950	1,932
radius in mm	110	110	109	108
Cat. No.	microliter tubes	Rhesus	tubes²⁾	



Adapter



boring Ø x L in mm	11.5 x 38	11.5 x 38	6.5 x 23	12.5 x 44
vessels per rotor	36	36	120	48
Cat. No.	5277	5277	1357	1326

SWING-OUT ROTOR, 4-PLACE | 1624



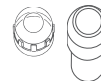
Rotor

max. RPM max. RCF ²⁾	4,000 min ⁻¹ 2,665		
max. capacity	4 x 100 ml		
run-up run-down, braked in sec	20 25		
angle max. noise level	90° 58 dB (A)		
temperature in °C	-15		
Cat. No.	1624		



Bucket

Lid bioseal ⁵⁾	1492
Cat. No.	1481



Vessels



capacity in ml	0.5	1.5	2.0	1	3	4	5	6	7	9	15	25	50	85	100
Ø x L in mm	10.7 x 46	11 x 38	11 x 38	6 x 45	10 x 60	10 x 88	12 x 75	12 x 82	12 x 100	14 x 100	17 x 100	24 x 100	34 x 100	38 x 106	44 x 100
max. RCF ²⁾	2,379	2,451	2,451	2,594	2,630	2,630	2,558	2,558	2,558	2,540	2,540	2,433	2,415	2,612	2,558
radius in mm	133	137	137	145	147	131	143	143	143	142	142	136	135	146	143
Cat. No.	Pediatric	microliter tubes			Rhesus		tubes²⁾								



Adapter



boring Ø x L in mm	11.2 x 38	11.2 x 38	11.2 x 38	6.5 x 34	10.5 x 43	13.4 x 45	13.4 x 45	13.4 x 45	13.4 x 45	17.6 x 89	17.6 x 89	25.2 x 77	35.2 x 75	38.5 x 92	45.9 x 98
vessels per rotor	20	20	20	108	36	20	20	20	20	16	16	4	4	4	4
Cat. No.	1351	1351	1351	1339	1343	1383	1383	1383	1383	1329	1329	1330	1331	1396	0761

Spacer

SWING-OUT ROTOR, 4-PLACE | 1624



Rotor

max. RPM max. RCF	4,000 min ⁻¹ 2,665
max. capacity	4 x 100 ml
run-up run-down, braked in sec	20 25
angle max. noise level	90° 58 dB (A)
temperature in °C	-15
Cat. No.	1624

Bucket

Lid bioseal ⁵⁾	1492
Cat. No.	1481



Vessels

capacity in ml	1.1-1.4	2.7-3	4.5-5	2.6-2.9	4.9	4-8.5	7.5-8.2	9-10	10	1.6-5	4-7	4-7	8.5-10
Ø x L in mm	8 x 66	11 x 66	11 x 92	13 x 65	13 x 90	15 x 75	15 x 92	16 x 92	15 x 102	13 x 75	13 x 100	16 x 75	16 x 100
max. RCF ²⁾	2,576	2,558	2,558	2,558	2,558	2,576	2,576	2,540	2,665	2,558	2,558	2,522	2,522
radius in mm	144	143	143	143	143	144	144	142	149	143	143	141	141
Cat. No.	blood collection / urine vessels												



Adapter

boring Ø x L in mm	9x47	13.4x45	13.4x45	13.4x45	13.4x45	15.6x47	15.6x47	17.6x89	17.6x89	13.4x45	13.4x45	16.5x52	16.5x52
vessels per rotor	28	20	20	20	20	16	16	16	16	20	20	16	16
Cat. No.	1457	1383	1383	1383	1383	1459	1459	1329	1329⁴⁾	1383	1383	1348	1348

Vessels

capacity in ml	15	50	12	25	30	50	10	30	50	85	30	
Ø x L in mm	17 x 120	29 x 115	17 x 100	25 x 90	25 x 110	29 x 115	16 x 80	26 x 95	29 x 107	38 x 106	44 x 105	
max. RCF ²⁾	2,665	2,665	2,665	2,343	2,665	2,665	2,522	2,451	2,630	2,612	2,540	
radius in mm	149	149	149	131	149	149	141	137	147	146	142	
Cat. No.	tubes with screw cap											0534⁶⁾

chrome bath tube



Adapter

boring Ø x L in mm	17x90	30x90	17x80	26x72	26x80	29.5x80	16.5x52	26x83	29x93	38.5x92	45.9x98
vessels per rotor	4	4	4	4	4	4	16	4	4	4	4
Cat. No.	1347	1384	6311	1363	1365	6318	1348	4417	4416	1396	0765

Spacer

1) For cooled versions: Lowest temperature achievable with precooling and max. speed.
 2) Please note that the RCF values indicated refer only to rotor performance. The max. permissible RCF of tubes used should be verified with the individual manufacturers. The max. RCF for glass tubes annotated with footnote 2) is 4,000.
 3.) When using these tubes, bucket 1752 or 5051 cannot be closed with lid 1751 or 5053.
 4) Please remove the spacer.
 5) Tested by the TÜV in conformity with DIN EN 61010, section 2-020.
 6) A rubber stopper for closing the tube for agitating or mixing is available under Cat. No. 0535. The tube may not be centrifuged with the stopper.